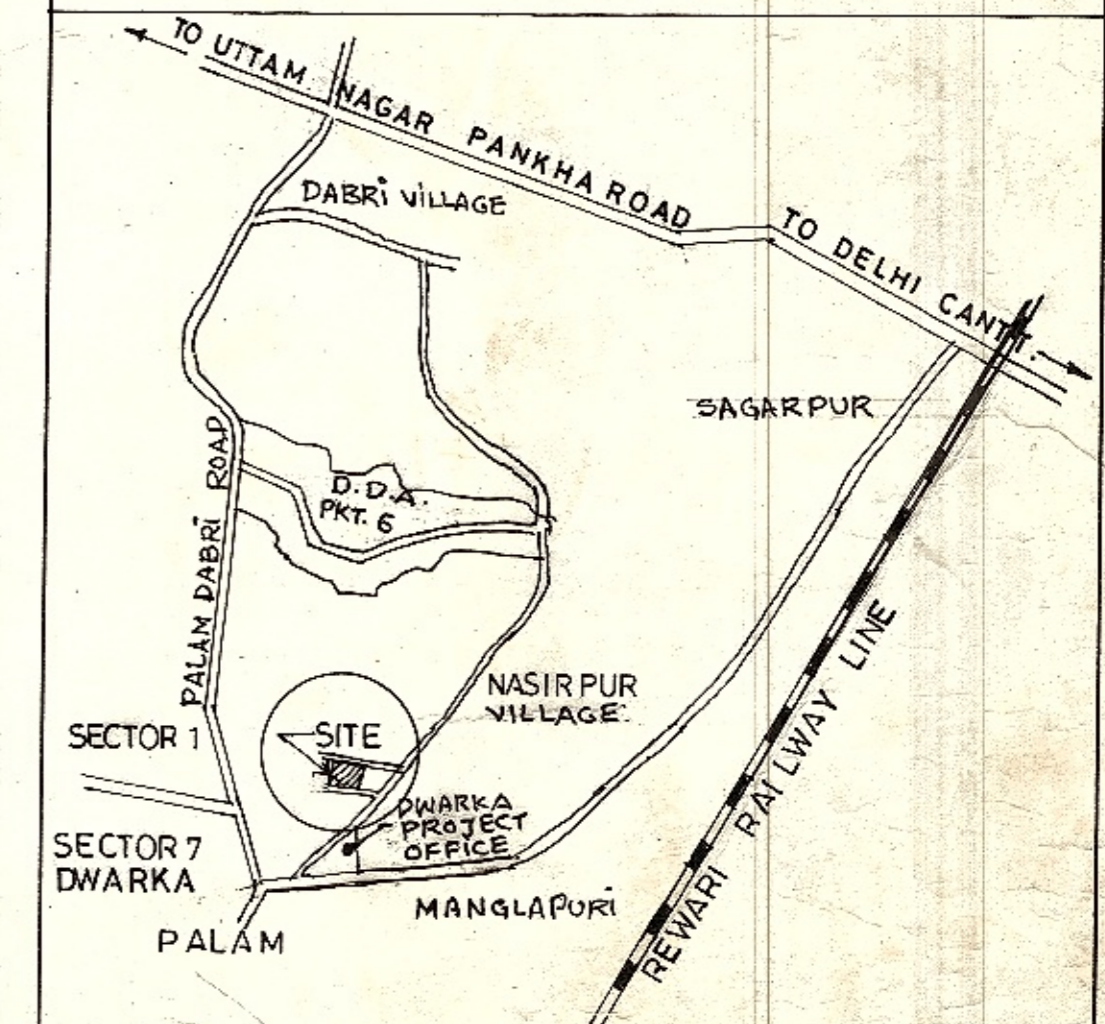


D. D. A.

DWARKA PROJECT



KEY PLAN

AREA STATEMENT

TOTAL AREA OF POCKET = 5885.89 SQM	
PROPOSED FACILITIES	AREA IN SQM.
• OCF/BARATGHAR	1680.00 SQM
DISPENSARY/ MATERNITY HOME	1000.00 SQM.
• TAXI THREE WHEELER STAND	400.00 SQM
• MILK/ VEG. BOOTH	150.00 SQM
• ESS 11 KV	80.00 SQM
• RECREATIONAL	2452.69 SQM
• CIRCULATION (UNDER ROAD WIDENING)	123.20 SQM

NOTES:

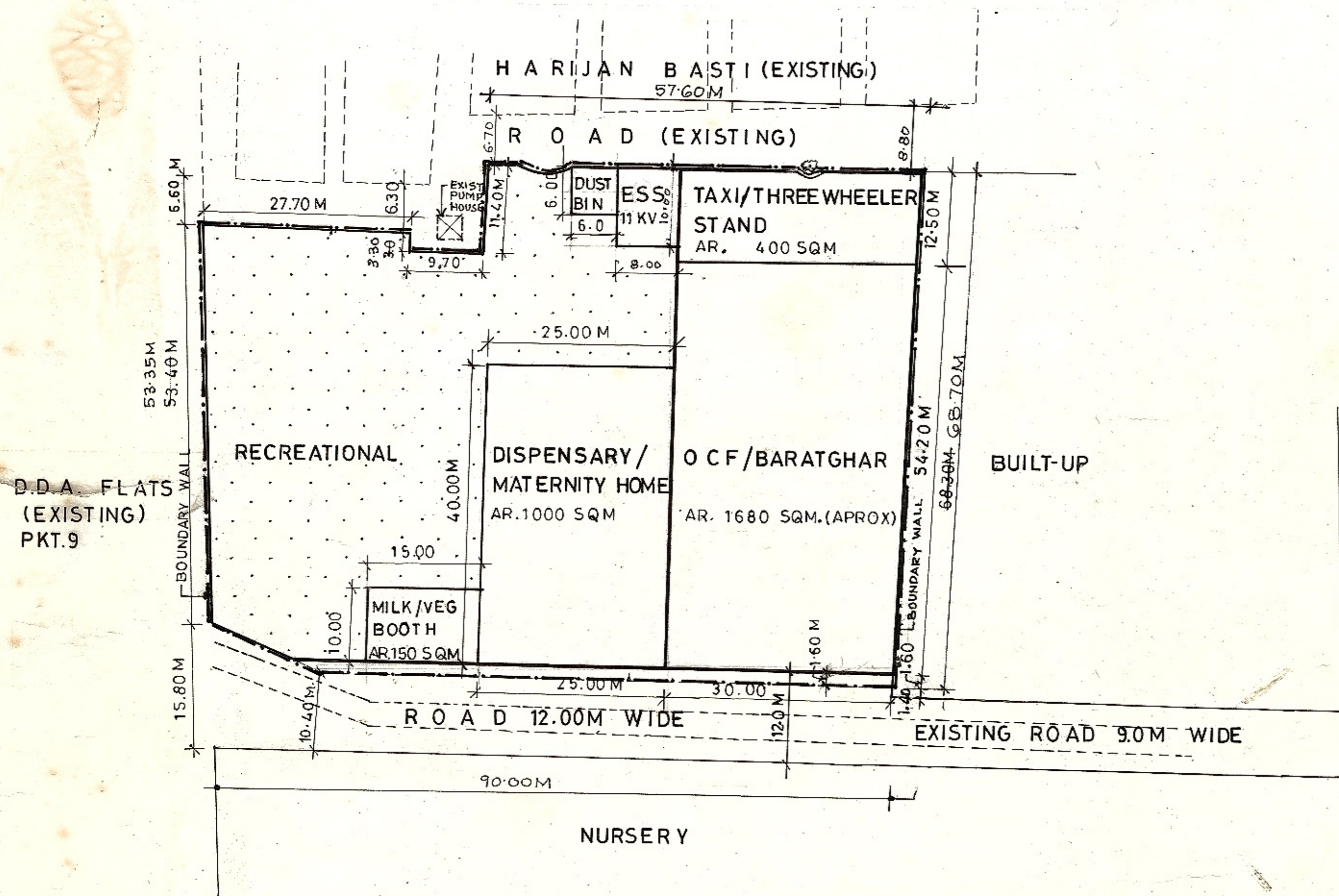
1. THE LAND IS TAKEN OVER BY THE ENGINEERING WING WD-6, DDA, NEW DELHI AND IS FENCED AS INTIMATED VIDE LETTER NO. F1(208) AE(P)WD-6/DDA/10 DT. 51.05.
2. THIS LAYOUT PLAN HAS BEEN PREPARED ON THE BASIS OF P.T. SURVEY SUPPLIED BY SURVEY UNIT DWARKA ON DATED 25.02.05.

THE LAYOUT PLAN HAS BEEN APPROVED IN THE 243RD SCREENING COMMITTEE MEETING HELD ON 29.11.2005. VIDE ITEM NO. 103.2005 IN FILE NO. F1(450) 2005/PLG/DWK/PT II. THE SAME HAS BEEN CERTIFIED BY JT. DIR(PLG) & VERIFIED BY DW/DIR(ARCH) COORN.

LAYOUT PLAN OF GAON SABHA POCKET-6 NASIRPUR VILLAGE. (KHASRA NO. 446.)

SCALE 1:500 DRG. NO. DWK/NASIRPUR/LOP/PKT-6/JUNE 05/49

(Signature) (Basba Nand) PLG. D/MAN	PLG. ASST.	N ↑
ASST. DIR. (PLG.)	JT. DIRECTOR (PLG.)	



TO NASIRPUR
TO PALAM
EXISTING ROAD 15.00 M. WIDE APPROX.

THE FEASIBILITY REPORT HAS BEEN RECEIVED FOR THE GAON POCKETS G. 7, 8, 9, 10, 11 & 12 (NASIRPUR) FROM THE EX. ENGINEER WD-6 VIDE LETTER NO. F1(450) 2005/PLG/DWK/PT II DT. 13.30.05 AND THE SAME HAS BEEN INCORPORATED IN THE REPORT HAS BEEN KEPT IN FILE F1(450) 2005/PLG/DWK/PT II PAGE 33 & 37/C.

DELHI DEVELOPMENT AUTHORITY